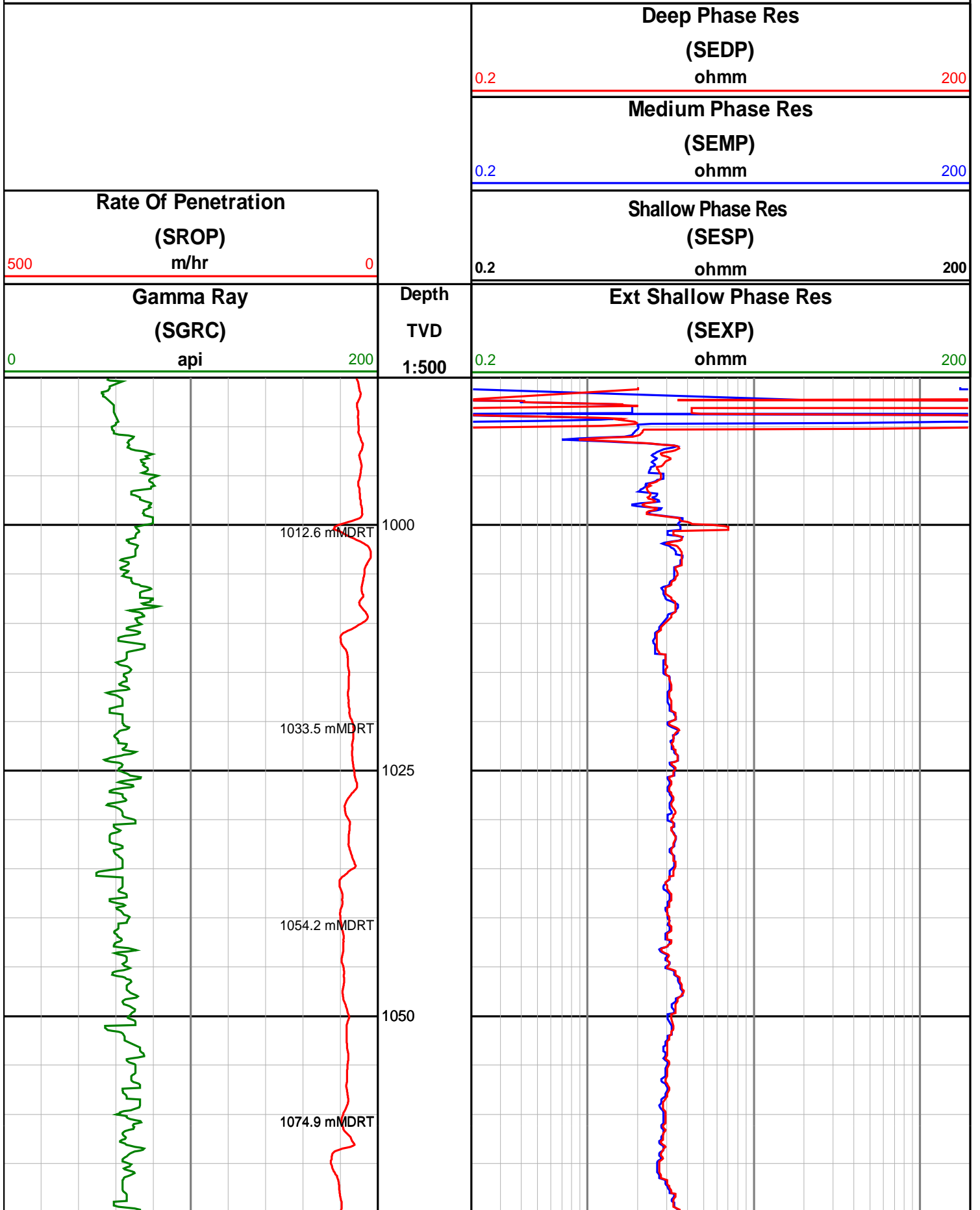
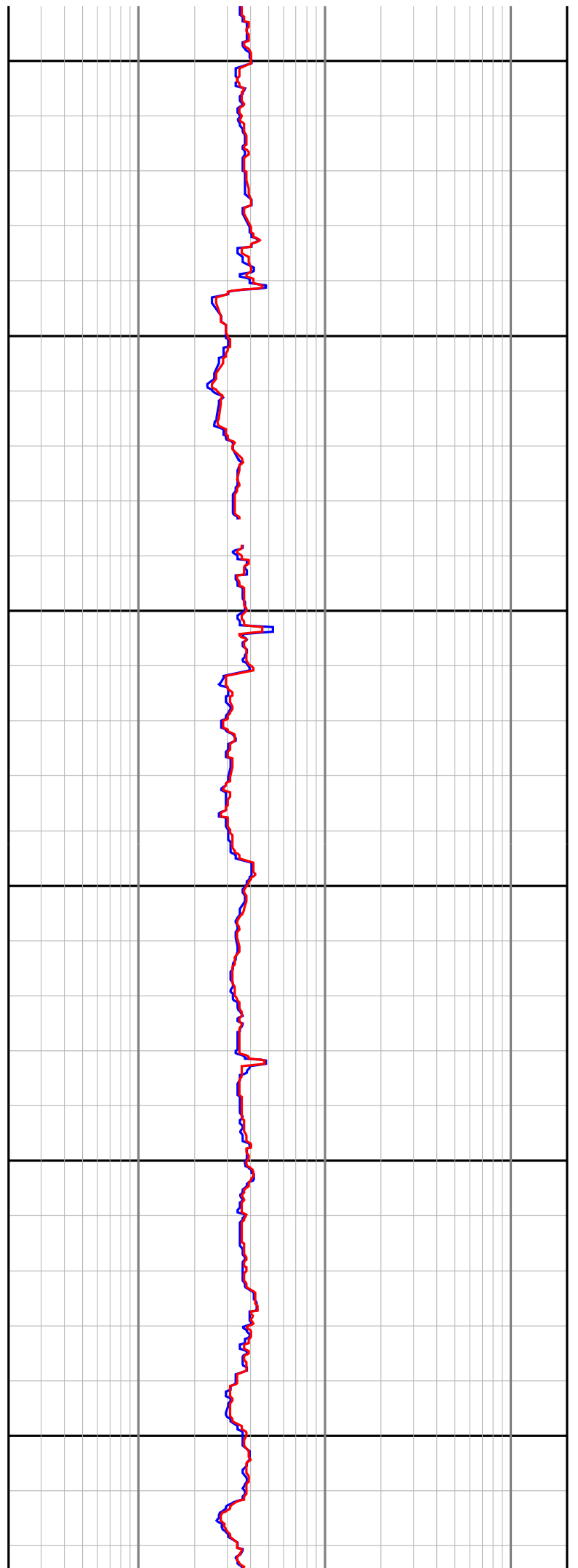
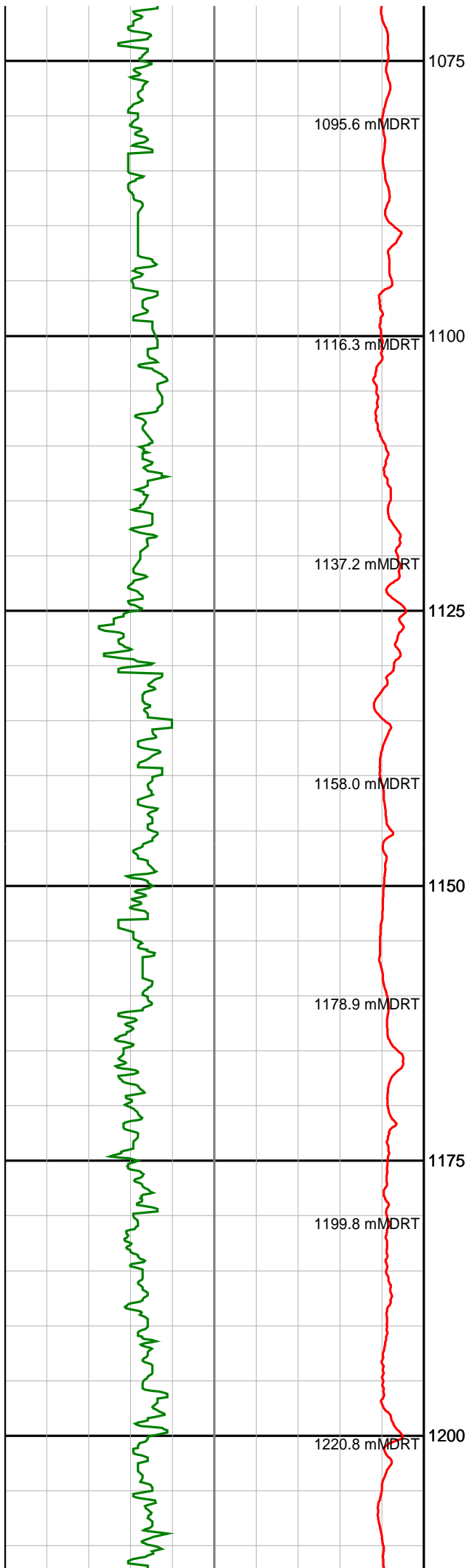


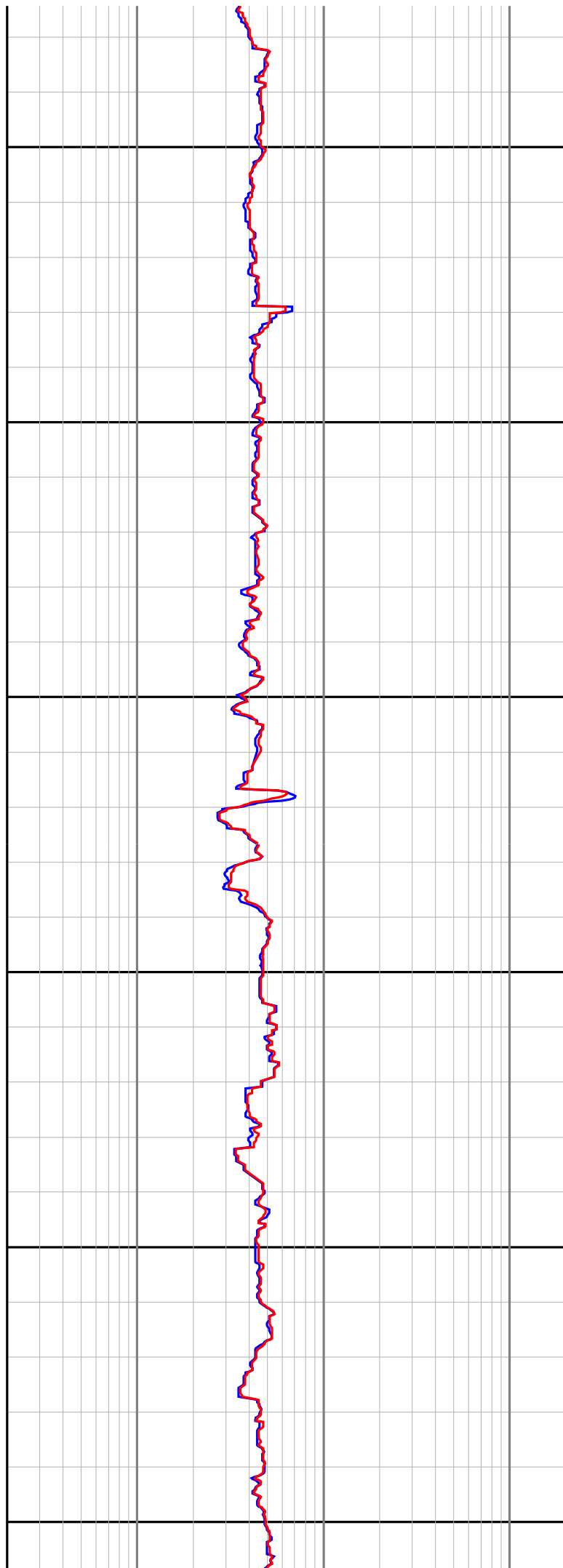
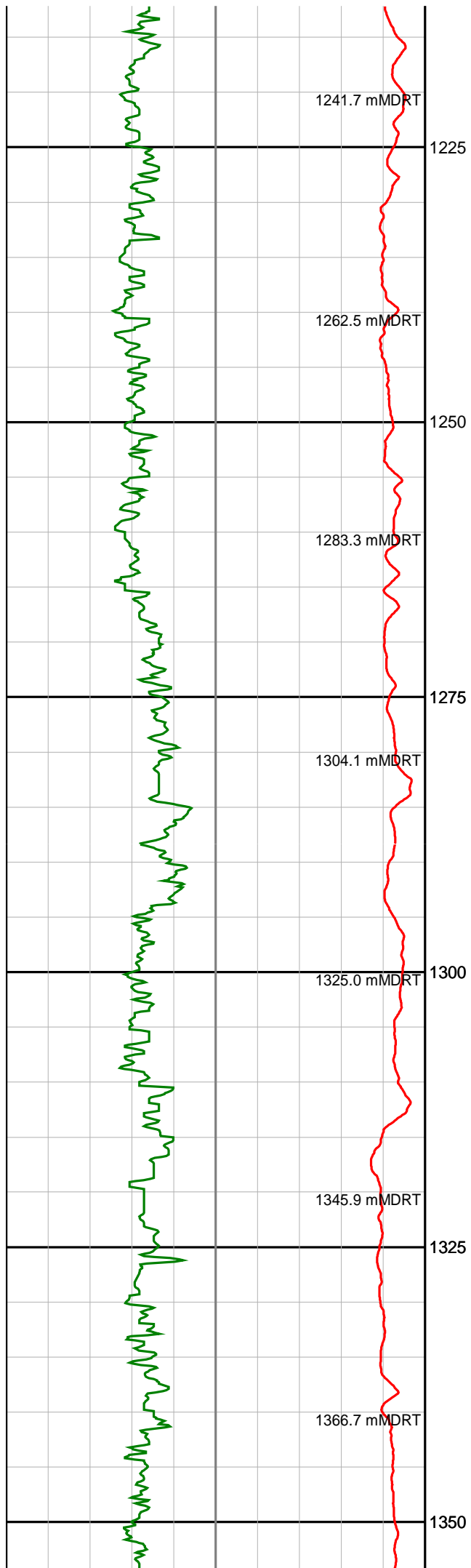
Anzon Australia Ltd

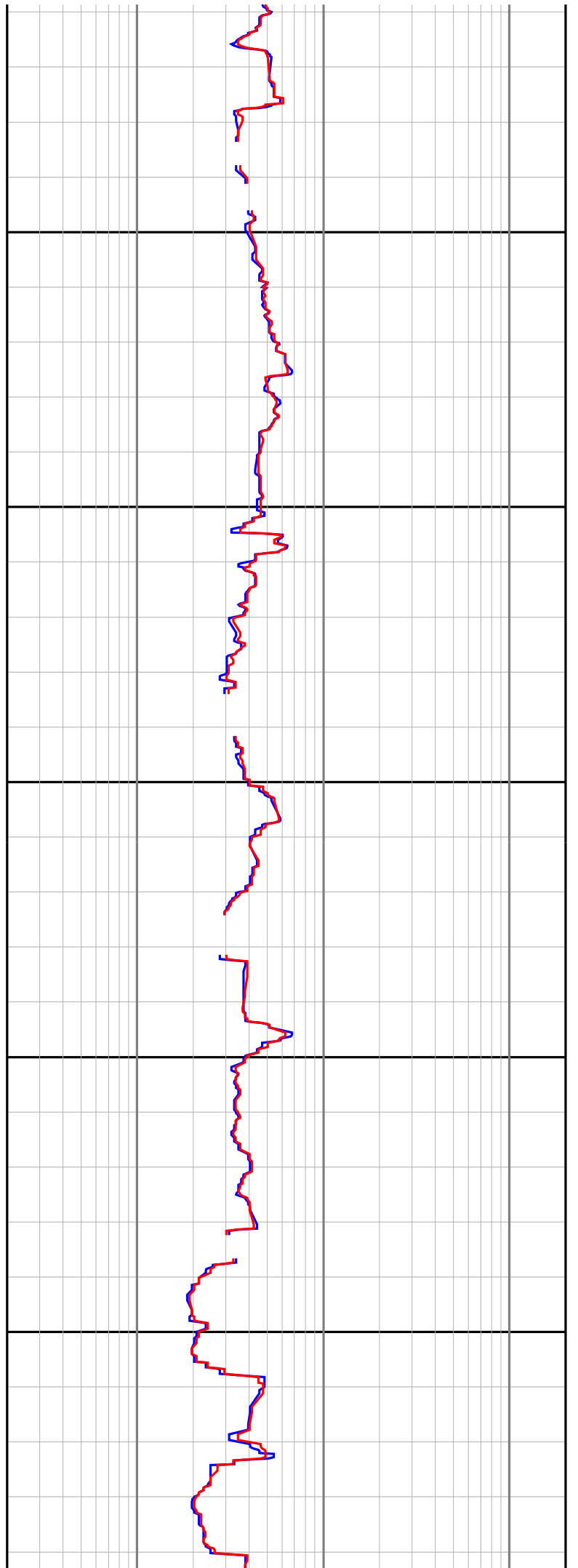
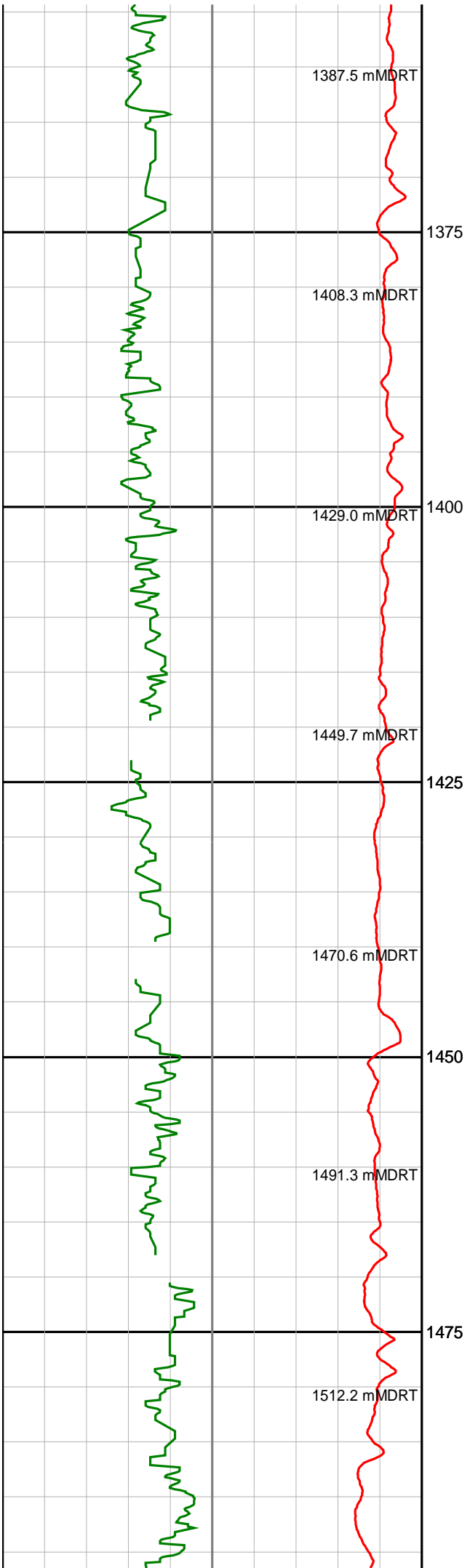
Basker-5

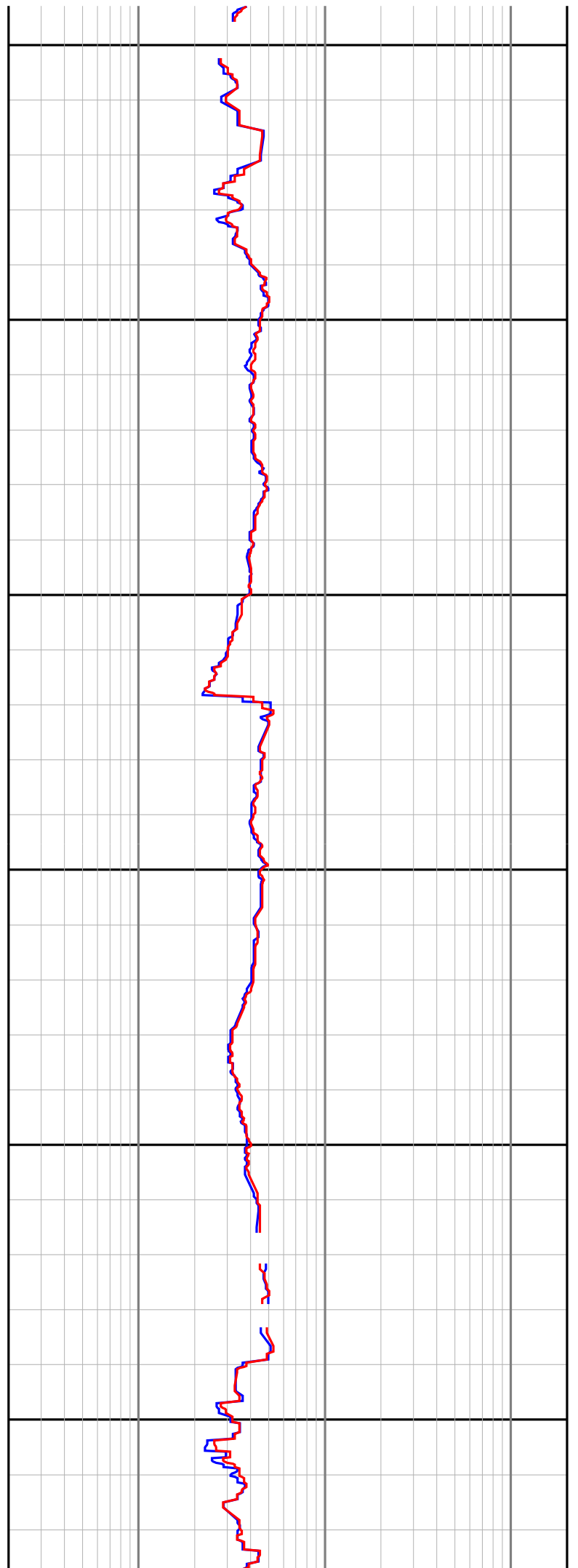
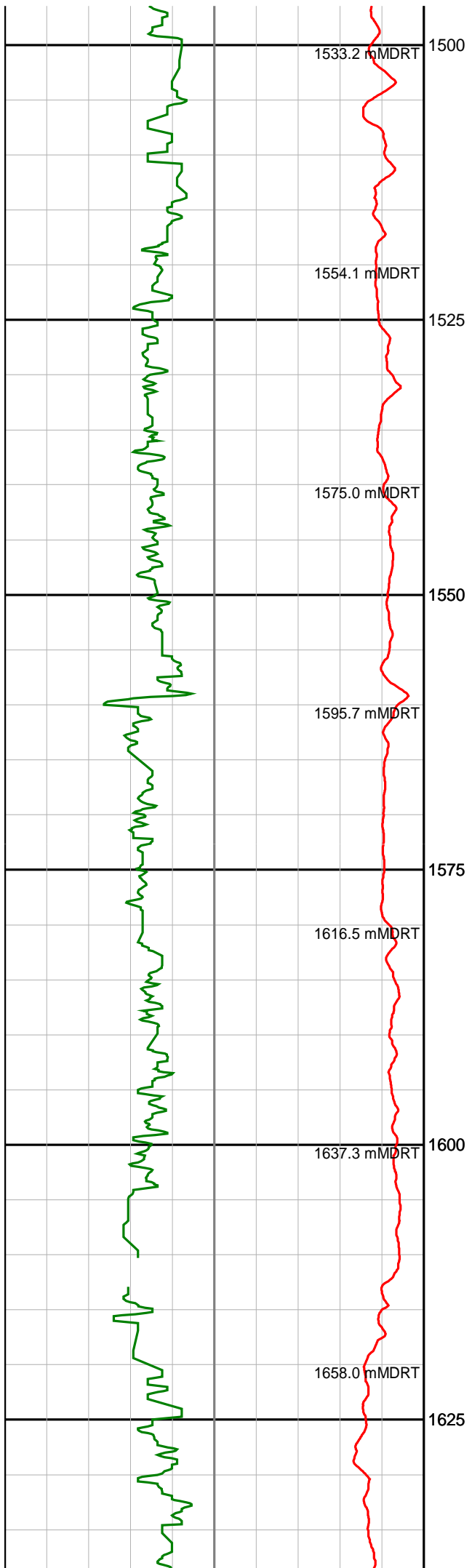
Realtime LWD Log (Permanent Datum - LAT)

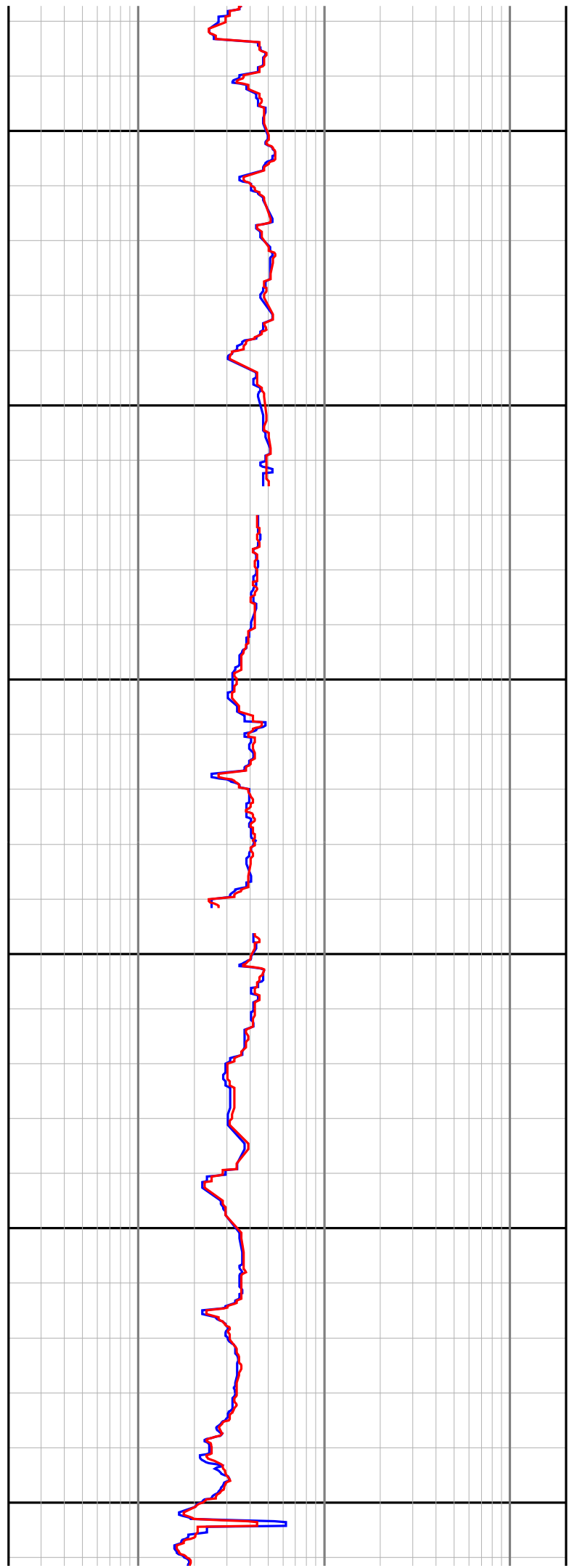
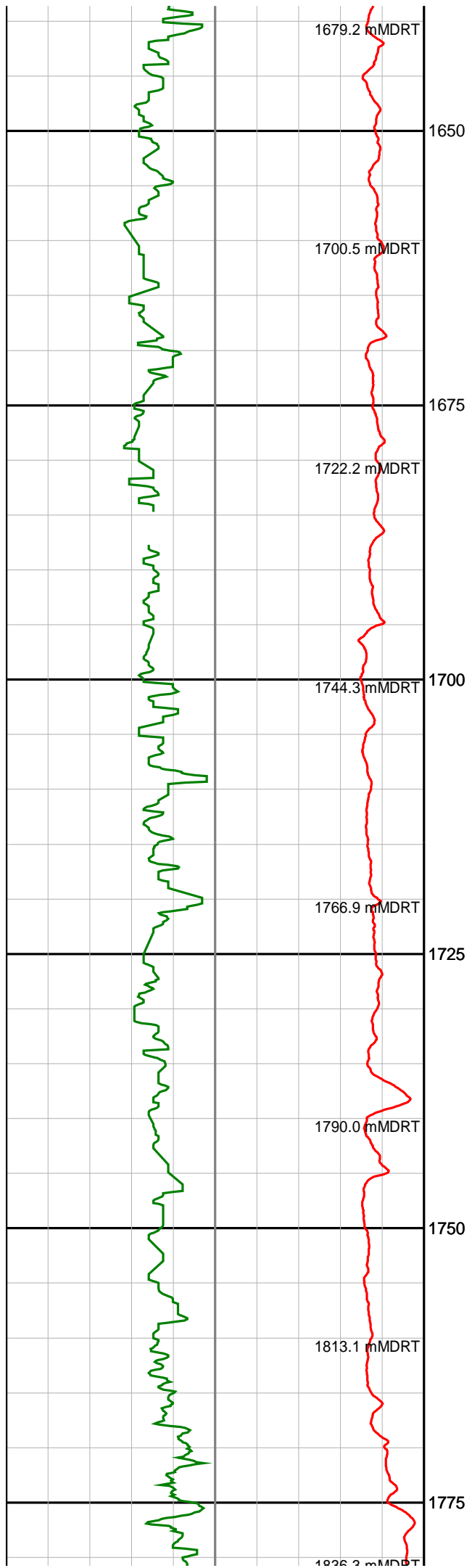


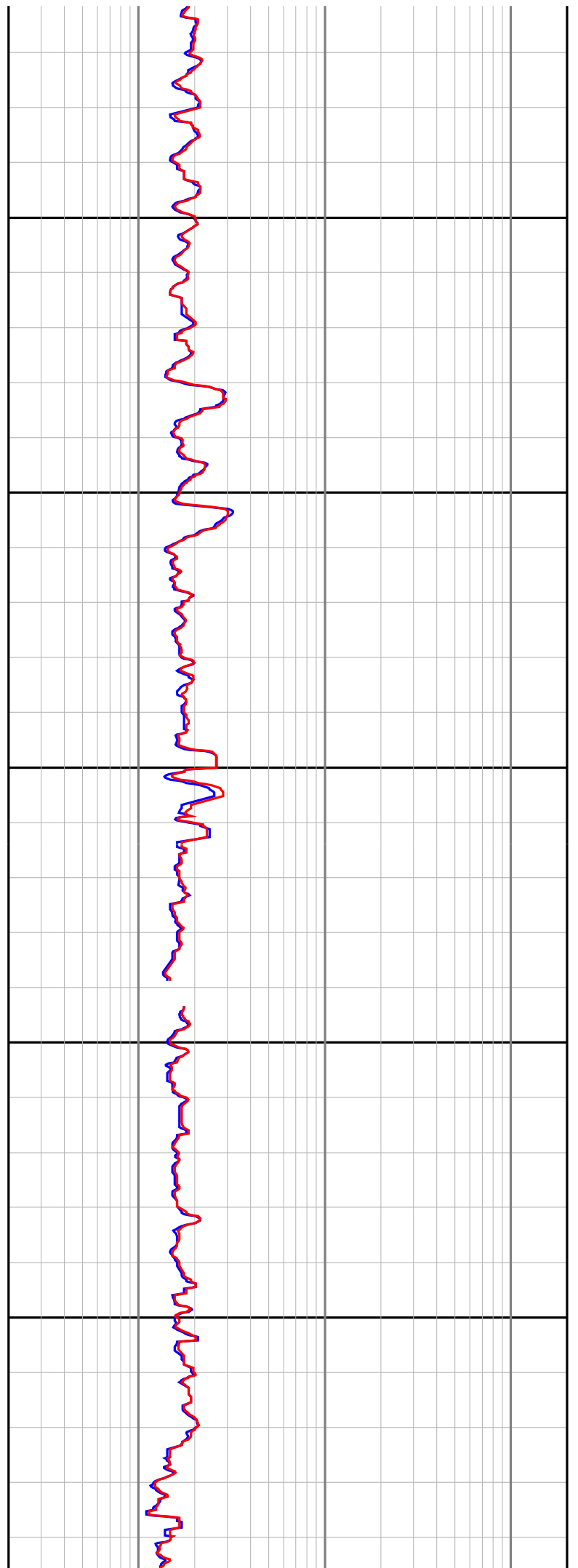
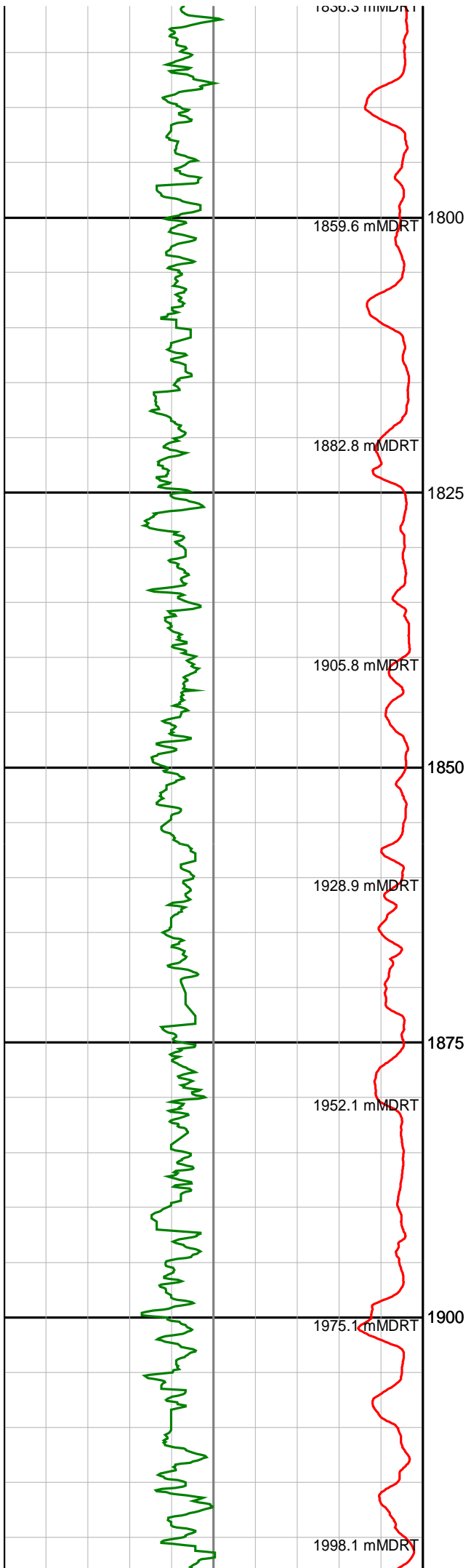


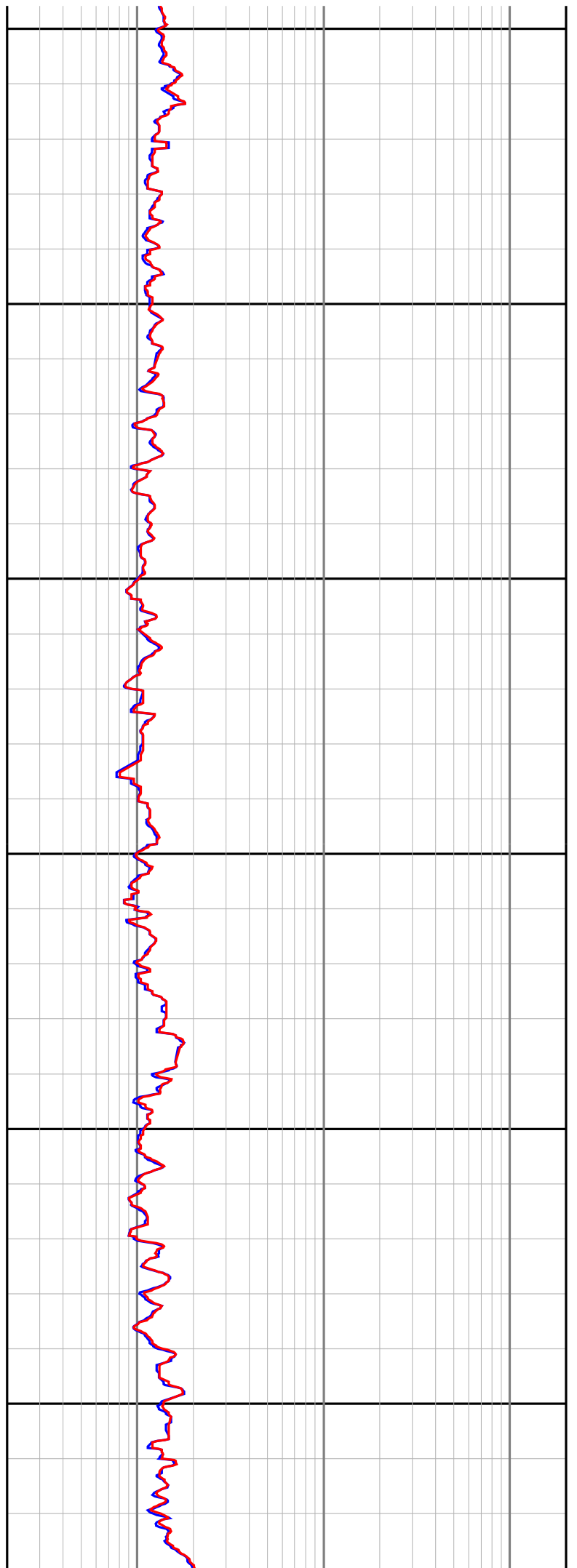
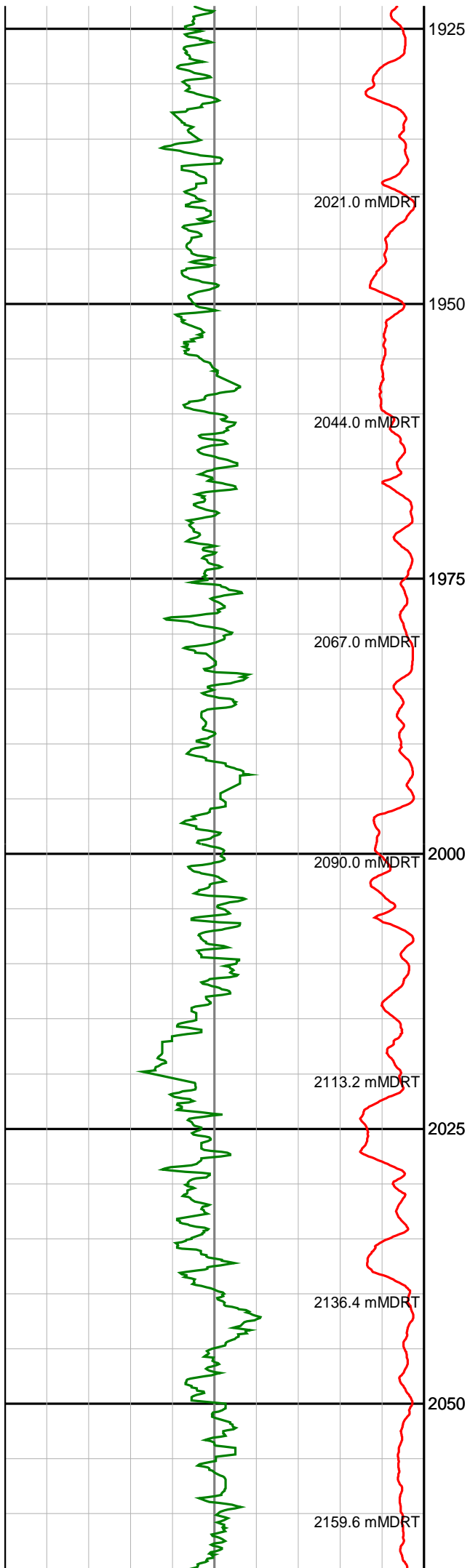


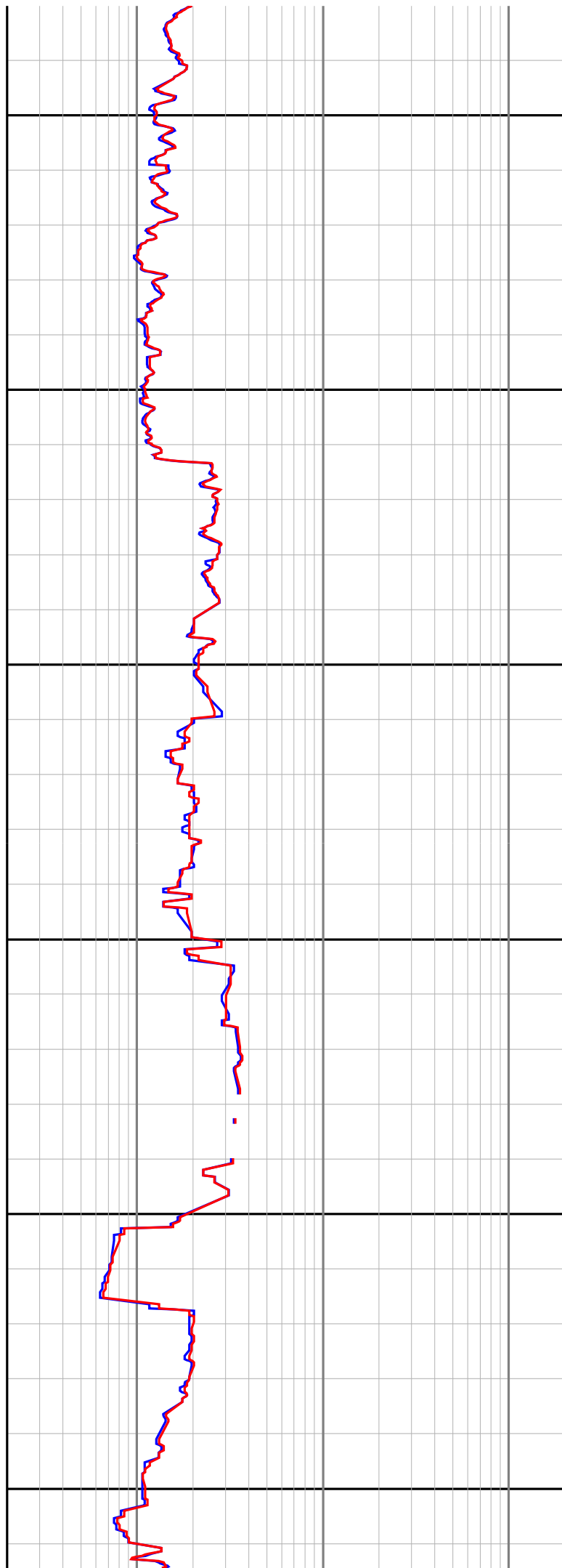
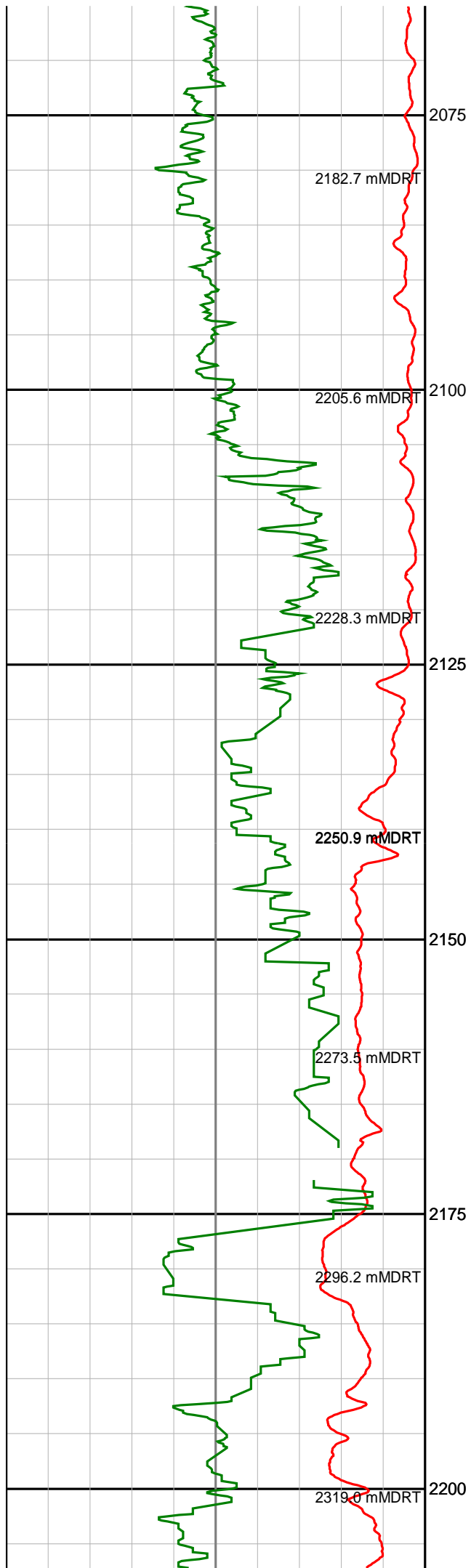


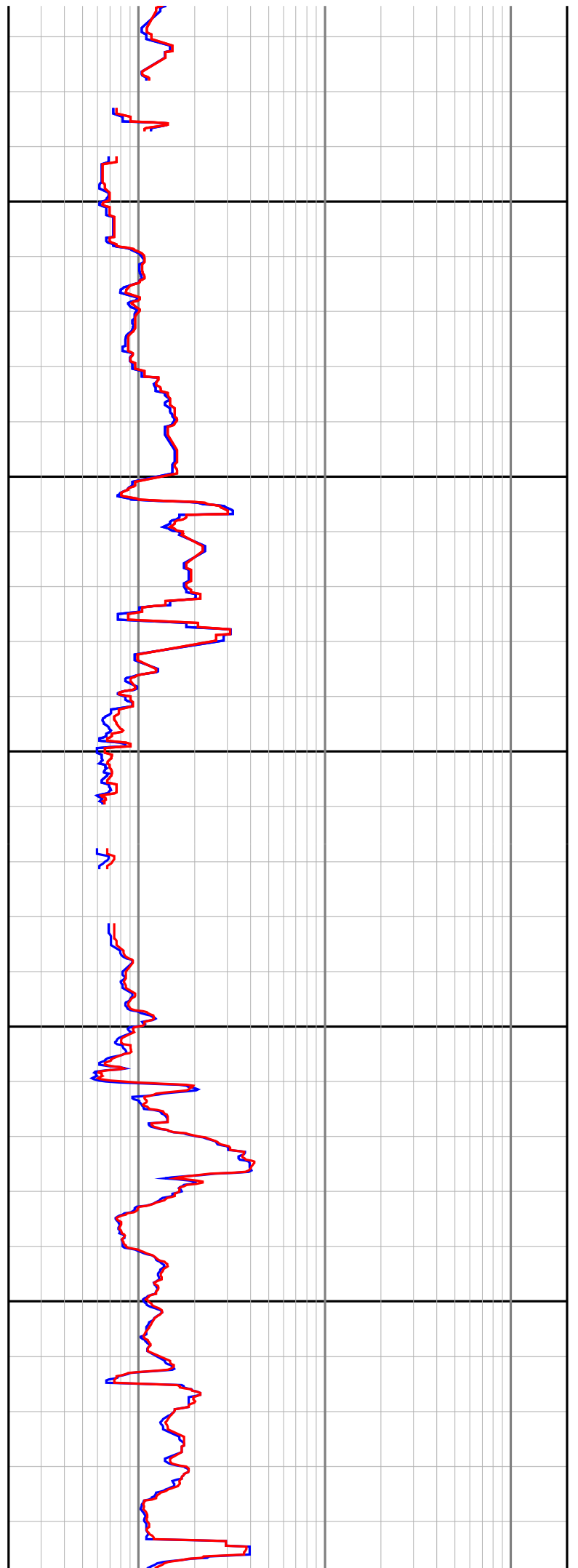
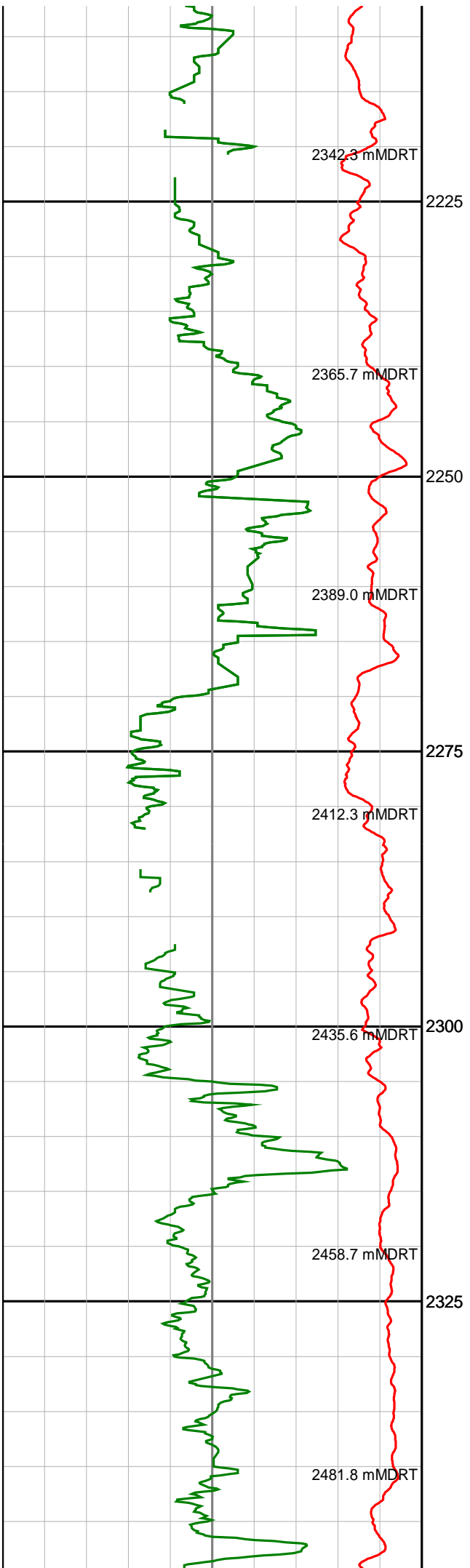


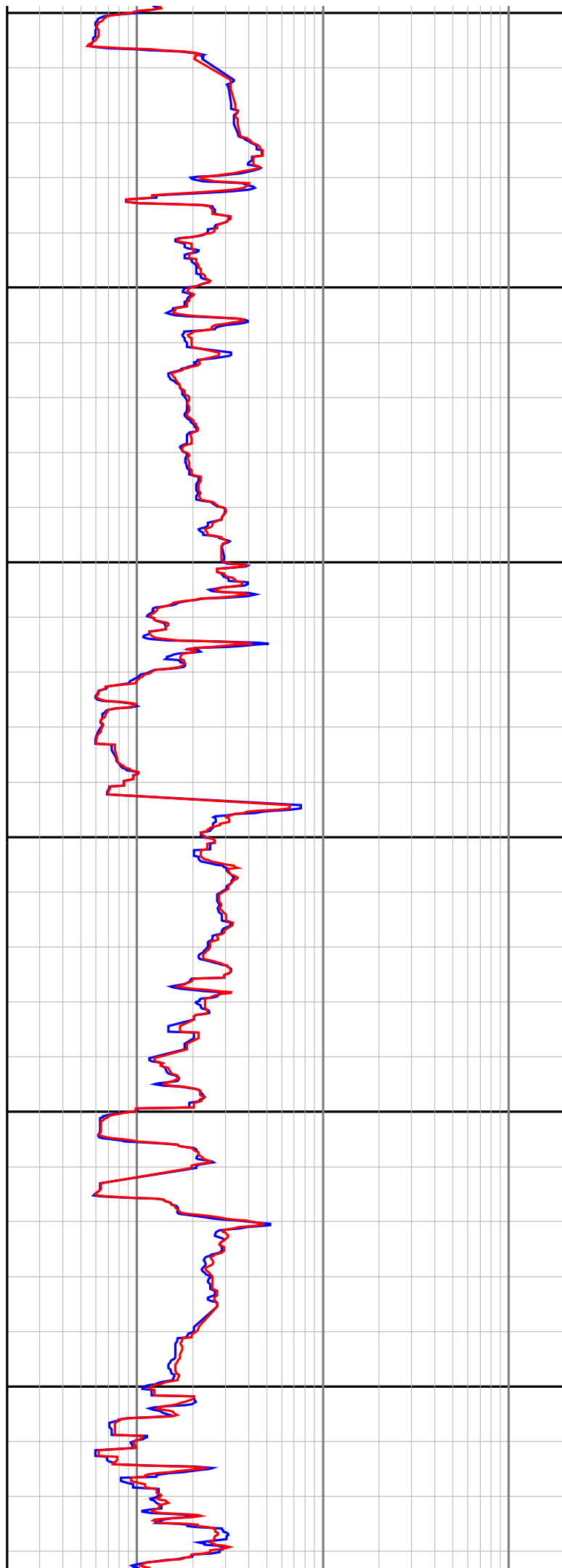
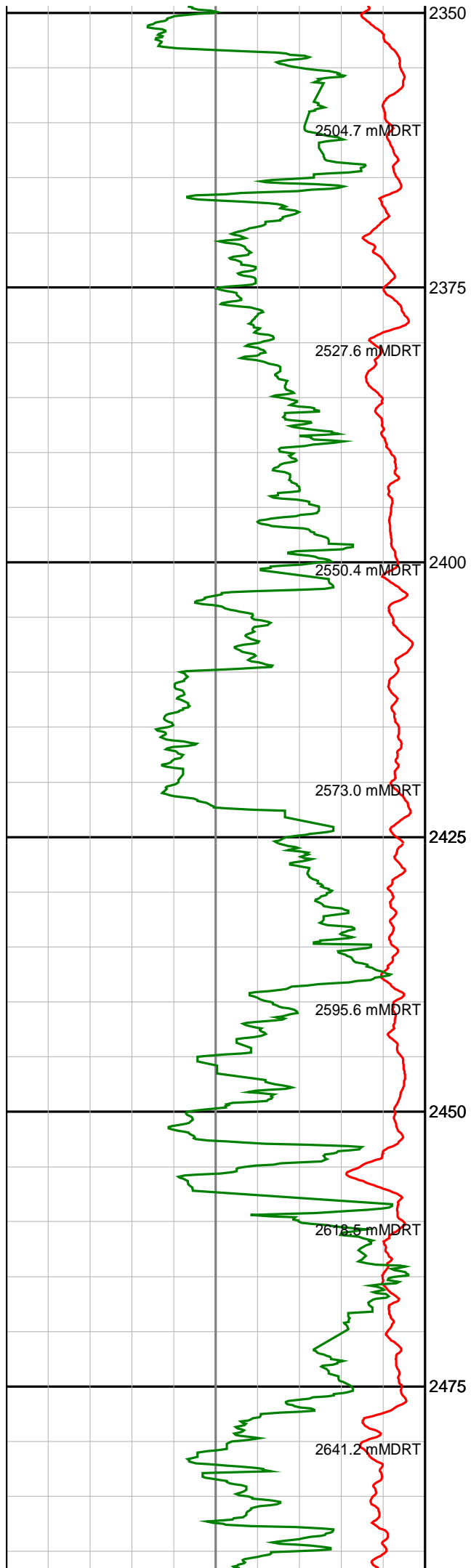


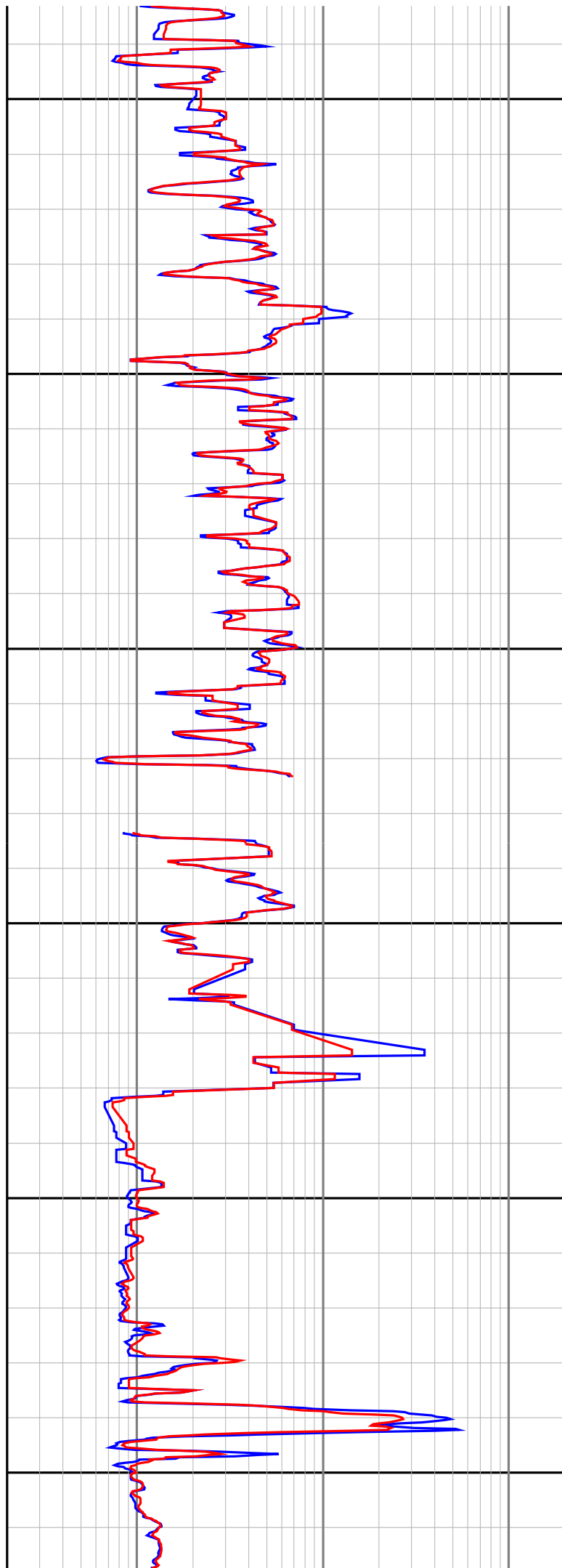
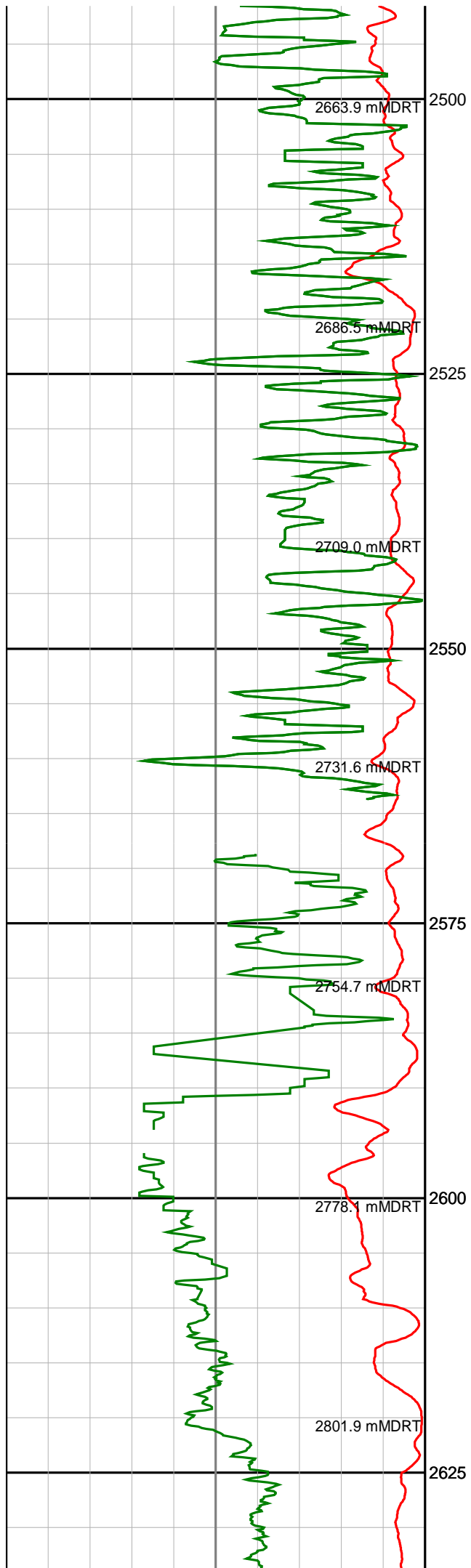


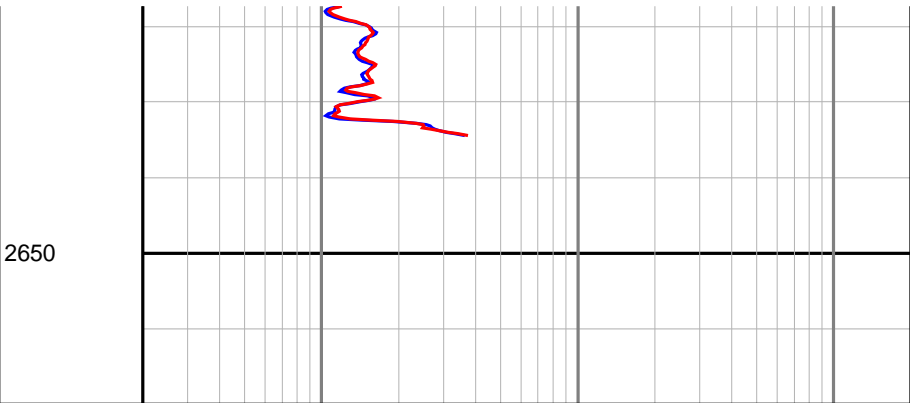
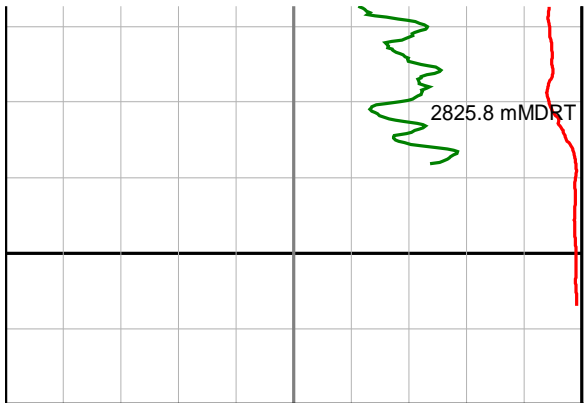












**Gamma Ray
(SGRC)**
api

**Depth
TVD
1:500**

**Ext Shallow Phase Res
(SEXP)**
ohmm

**Rate Of Penetration
(SROP)**
m/hr

**Shallow Phase Res
(SESP)**
ohmm

**Medium Phase Res
(SEMP)**
ohmm

**Deep Phase Res
(SEDP)**
ohmm

0 200

0.2 200

500 0

0.2 200

0.2 200

0.2 200

2650

2825.8 mMDRT